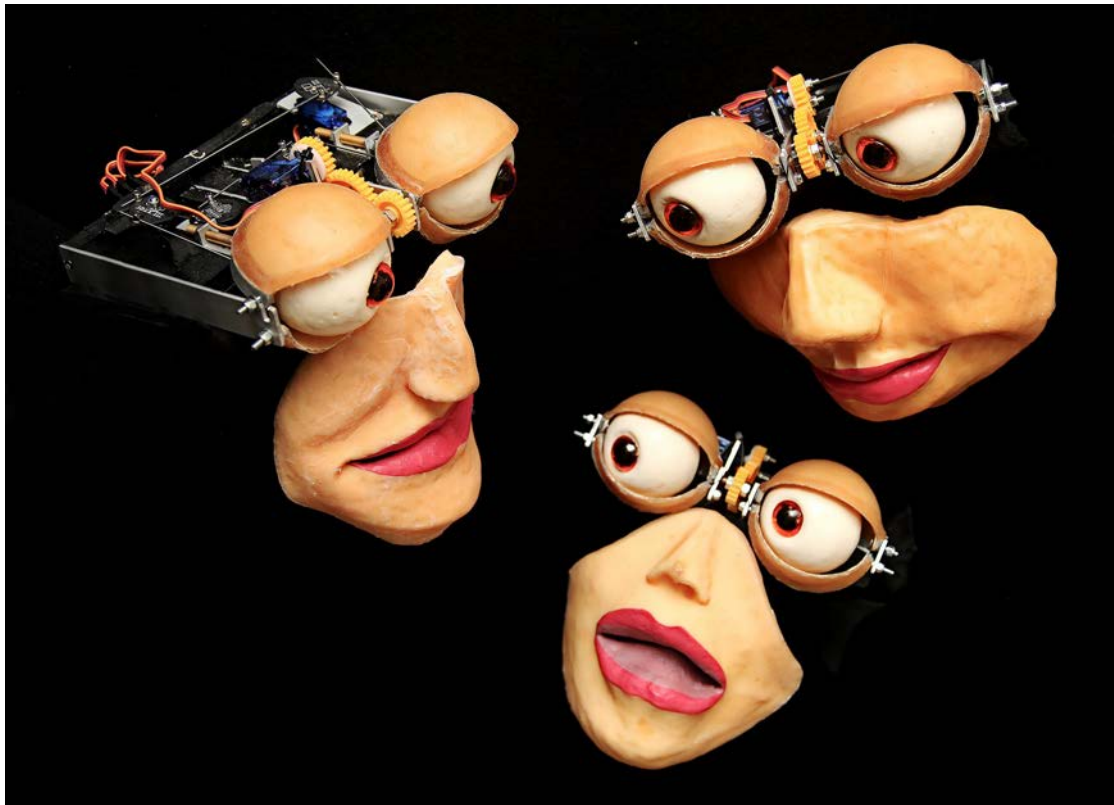


Tech Rider



half past selber schuld **Kafka in Wonderland**





half past selber schuld KAFKA IN WONDERLAND // Technical Rider

contact

management

management@halfpastselberschuld.de

technics

Oliver Vesper (sound)
oliver_vesper@yahoo.de
+49 176 29245688

Tobias Heide (light design)
grobsen@gmx.net
+49 174 7002256

travel and accommodation

performers

(8 persons)

technicians

(2 persons)

Oliver Vesper, Tobias Heide

management

(1 person)

optional

travel

truck (7,5t) for props (needs driver and parking place)
technicians and performers travel by plane/car/train

accommodation

10 single rooms

requirements

time schedule

setup	12 hours
rehearsal	min. 1 rehearsal on show day
duration	70 minutes, no break

stage

min. width: 12m | depth: 8m | opening: approx. 9m
stage: black curtains as described in the attached stage plot
floor: not raked and seamless, black dance carpet
The stage should not be much higher than public seats

The realization of the technical requirements should be arranged with our technicians. Especially the minimum stage sizes of the production could maybe be adapted for the conditions of the venue.

half past selber schuld

„Kafka in Wonderland“

Technical Requirements - Page 1 of 2

Stage:

Measurements:

- width: minimum 12m
- depth: minimum 8m
- opening: ca. 9m

Floor:

- not raked and seamless
- black dance carpet

Curtains:

- black curtains or panels positioned as described in the attached stage plot

Additional Requirements:

- some tables @ backstage
- dim, blue light behind the curtains at the side and back of the stage.
- all material necessary to attach our frame to your truss / pipe / grid
- microphone stand (tripod boom or overhead)
- good black out situation

half past selber schuld

„Kafka in Wonderland“

Technical Requirements - Page 2 of 2

Video:

- video projector (minimum 5000 ANSI lumen)
- wide angle optics (in case of back projection)
- video shutter, operated from the sound booth
- dvi signal from sound booth to the projector

The projection is 16:9 and 4m wide.

If the stage is deep enough, we prefer a back projection. In case of a front projection, the projector must be rigged to the ceiling.

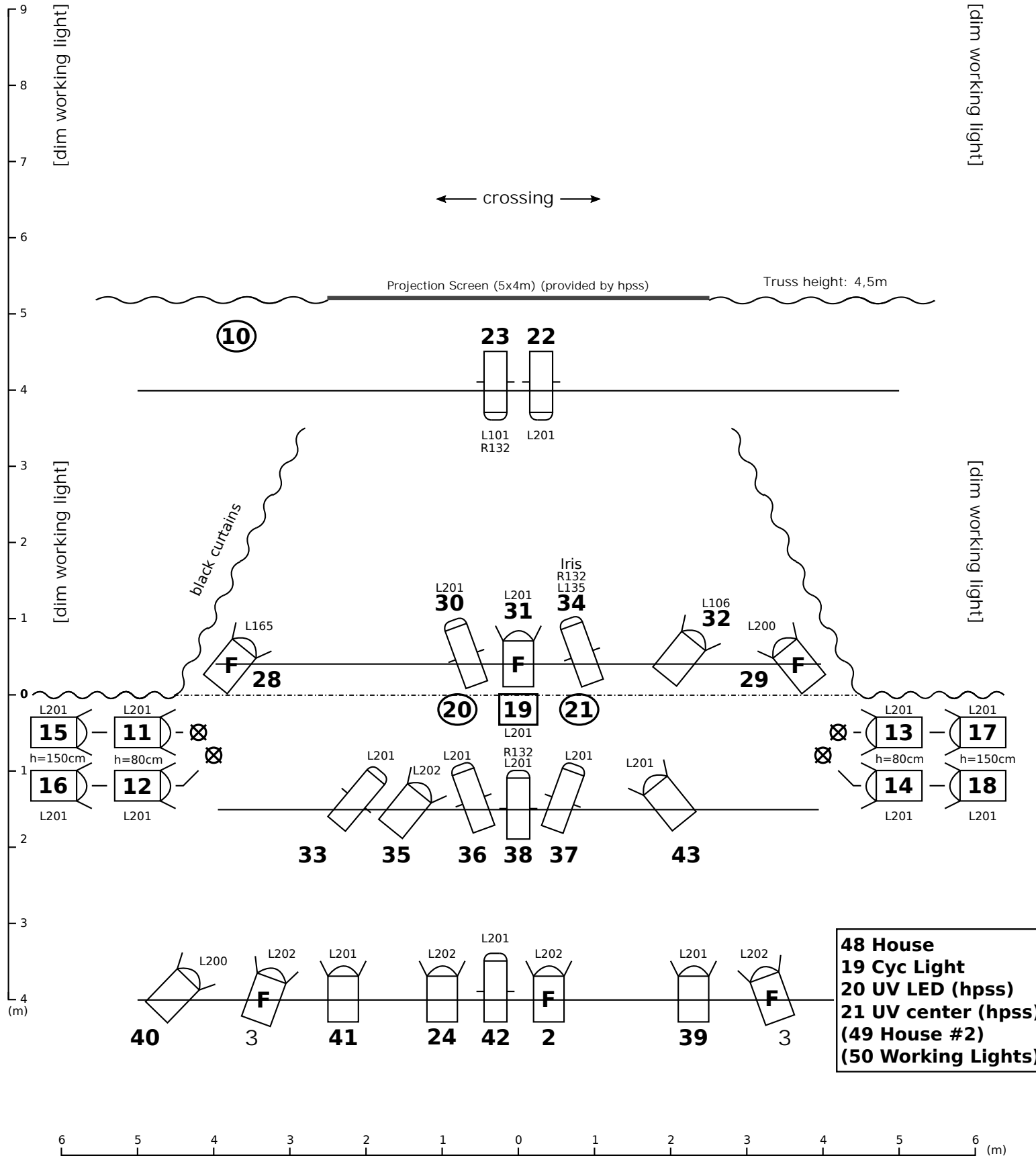
Lights:

All projectors and gels as described in the attached light plot.

Depending on the dimmers, we might need additional load for our UV-LEDs and light bulb (3 channels).

Sound:

See the attached sound rider.

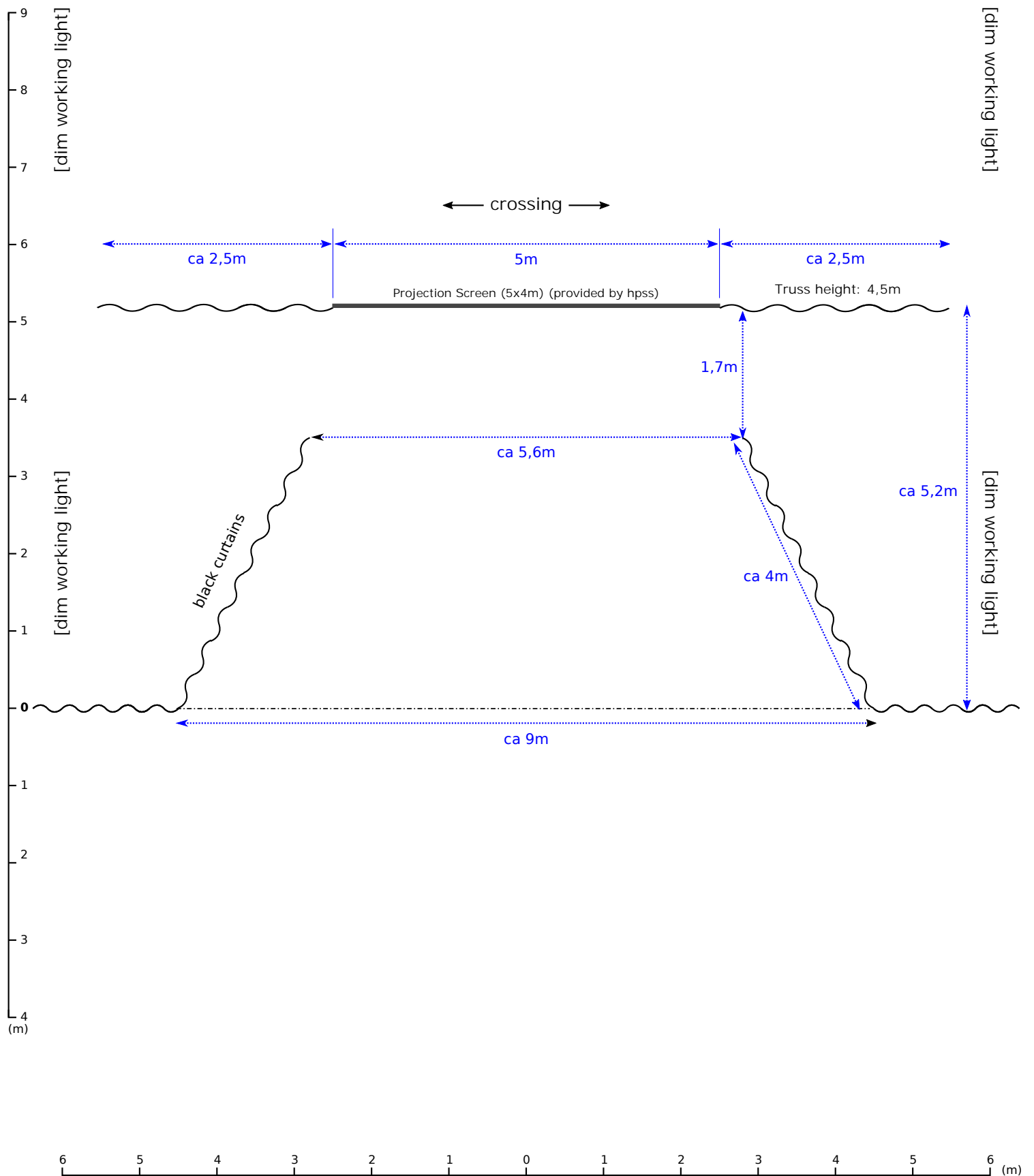


- 21x (F) PC / Fresnel 1kW with barn doors
- 9x [L-shape] Zoom Profile 1kW 1x Iris
- 1x [19] Cyc Light 500W on floor
- 3x (XY) Dimmer ch. on floor w/ dummy load
- 4x [X] Boom

L101/L106/ L135/L165/ L200/L201/ L202/R132 Gel # 3 Channel #

half past selber schuld

"Kafka in Wonderland"



half past selber schuld

"Kafka in Wonderland"

-Kafka in Wonderland- Soundequipment, schematic ; group: half past selber schuld,

date: 20.09.2018 questions (sound) welcome :

oliver_vesper@yahoo.de Oliver Vesper +49 176 29245688

Pa system:

High quality, Venue related, for Theatersound/syllable articulation and powerful Band Concert (with Subwoofer), delay lines and center-speaker if needed

High quality mixing console digital

16 channels (12 micpreamps)

e.g. Yamaha 01V96,

(eqs for all sends/outs,)

4x di box

1x sm58 talkback mic

sends/outs: Pa left/right, (venue-related maybe + Center R/L, maybe. Delaylines R/L)

3 Monitor Aux out pre fader

6x wedges stage ; (2x optical inconspicuous/small dimensions for edge of stage)

Some maybe flying/ on stands depending on the local conditions

- connected to 3 Aux prefader

Reliable video connection (hdmi/dvi/vga) from FOH to Beamer on stage

DMX shutter at FOH

If possible FOH in the hall

